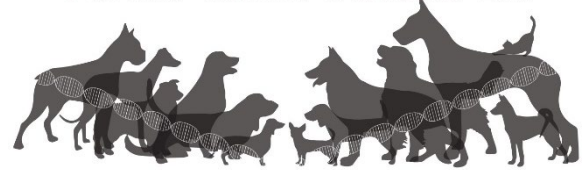




## Purdue Canine Genetics Lab



Animal Disease Diagnostic Laboratory

# Sample Submission Protocol: Semen

## Semen Sample

- Send 1 straw or 1/4 to 1/2 ml of semen in clean leak-proof tube.
- Label the sample with the dog's call name and the owner's last name.
- Semen samples do not need to be sent on liquid nitrogen and do not need to remain frozen.

## Forms

- Please download and complete the [Canine Genetics Individual Dog Submission Form](#).
- Complete a submission form for each dog and **include it with the sample shipment**.

## Fees & Payment

- All fees are listed on the corresponding test website and payment at the time of submission is required.
- If you are requesting multiple tests to be run on the same dog, select the discounted "Combo Test" option.
- Submit payment by visiting <https://purdue.vet/addl-touchnet>, and print a copy of the receipt.
- Samples must be shipped **with a copy of your receipt**.

## Shipping

- Place tubes for each dog into individual, leakproof plastic bags or a hard-plastic container.
  - Examples: pill bottle or syringe casing.
  - Pack in an outer leakproof, plastic bag with absorptive material to contain any leaks.
- Pack the sample in a small box or padded envelope.
  - Include a cold pack if the ambient temperature is 80° F or above.
    - Place the cold pack inside a leakproof, plastic bag to control moisture and prevent leakage.
- Ideally, ship the sample immediately. If you are waiting to ship, please freeze semen samples.
- Ship to arrive within 2-7 days (US Postal Service, UPS, FedEx; For Canada, Purolator is recommended).
  - Samples do not need to be sent overnight.
- Write "**Exempt Animal Specimen**" on the outside of the shipping container.
  - For shipments originating outside the US, include the **USDA Importation Documents** available on our website and at this link: <https://purdue.vet/addl-usdaimport>  
**\*Required for shipments originating outside of the US**
- Send package with samples and **ALL FORMS** (in a separate leakproof plastic bag) to:

**ADDL – Canine Genetic Tests**

**406 S. University Street**

**West Lafayette, IN 47907**

**Questions:** Contact the diagnostic lab by e-mail at [addl@purdue.edu](mailto:addl@purdue.edu).